

MALDEN PHOTOVOICE SHOWCASE 2024

PHOTO TAKEN BY SANDRA TANG



PHOTO TAKEN BY NATHANAEL OFOEDU



PHOTO TAKEN BY TERN PIERRE RENE

A PROJECT OF CAMBRIDGE HEALTH ALLIANCE'S
COMMUNITY HEALTH DEPARTMENT

About

Malden Youth Photovoice is an initiative of the Cambridge Health Alliance's Community Health Department, funded by the Massachusetts Department of Public Health's Office of Problem Gambling Services.

During the 2023 - 2024 school year, seven Malden high school students met weekly after school to explore issues related to the prevention of youth problem gambling. The youth built skills in both advocacy and photography. The youth also learned about health disparities and equity, the historical role and power of youth voice, underage gambling prevention, and healthy risk-taking.

This program seeks to empower youth by providing problem gambling education and supporting youth in expressing their own prevention message through photography.

Special Thank You's!

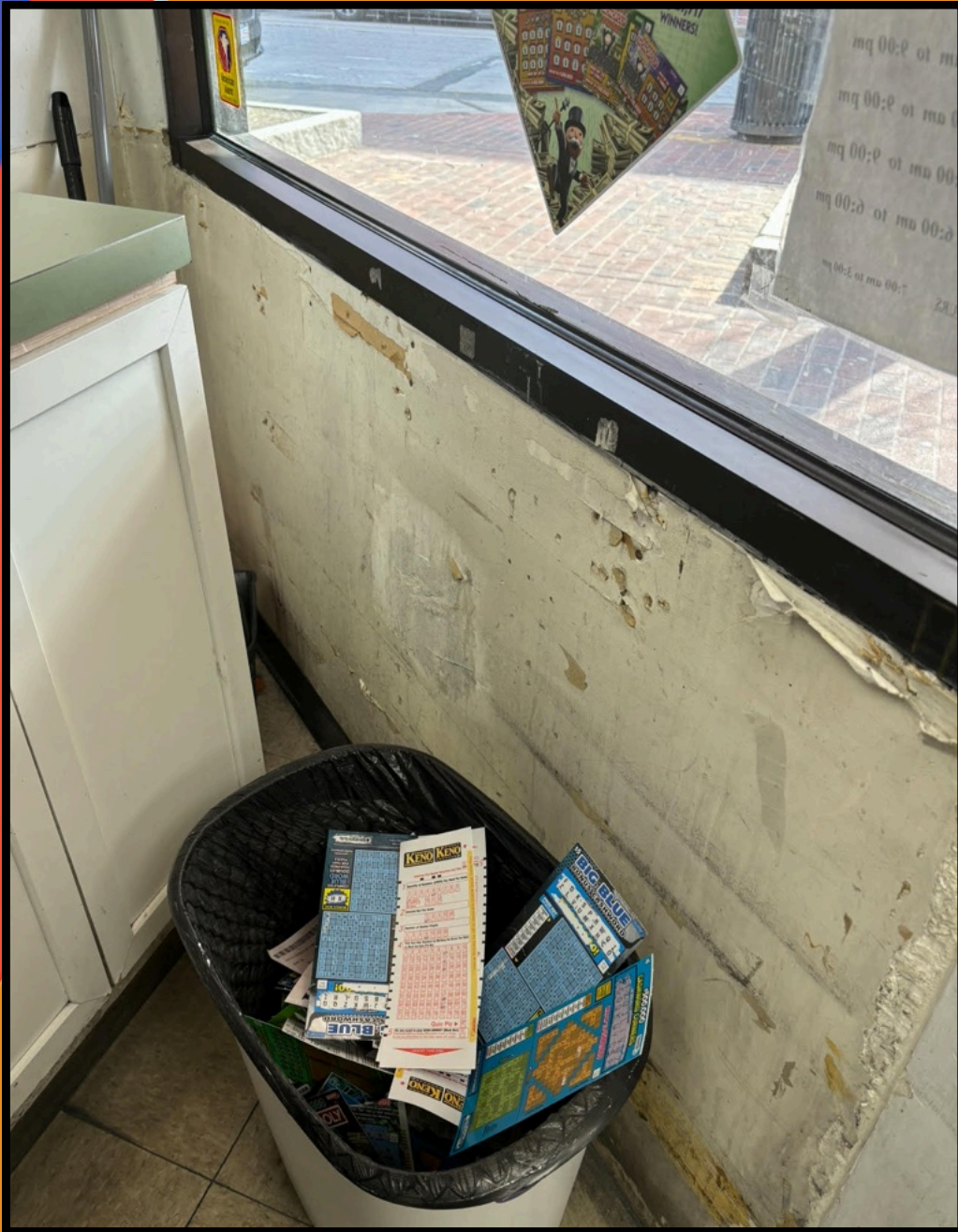
We would like to extend a huge thank you to the partners who make this project possible:

Massachusetts Department of Public Health's Office of Problem Gambling, Massachusetts Center of Excellence on Problem Gambling, Cambridge Health Alliance Community Health Department, Marie Motley and the Malden Public Schools, Cambridge Reprographics, and the parents of youth participants!

As well as a big thank you and congratulations to the youth:

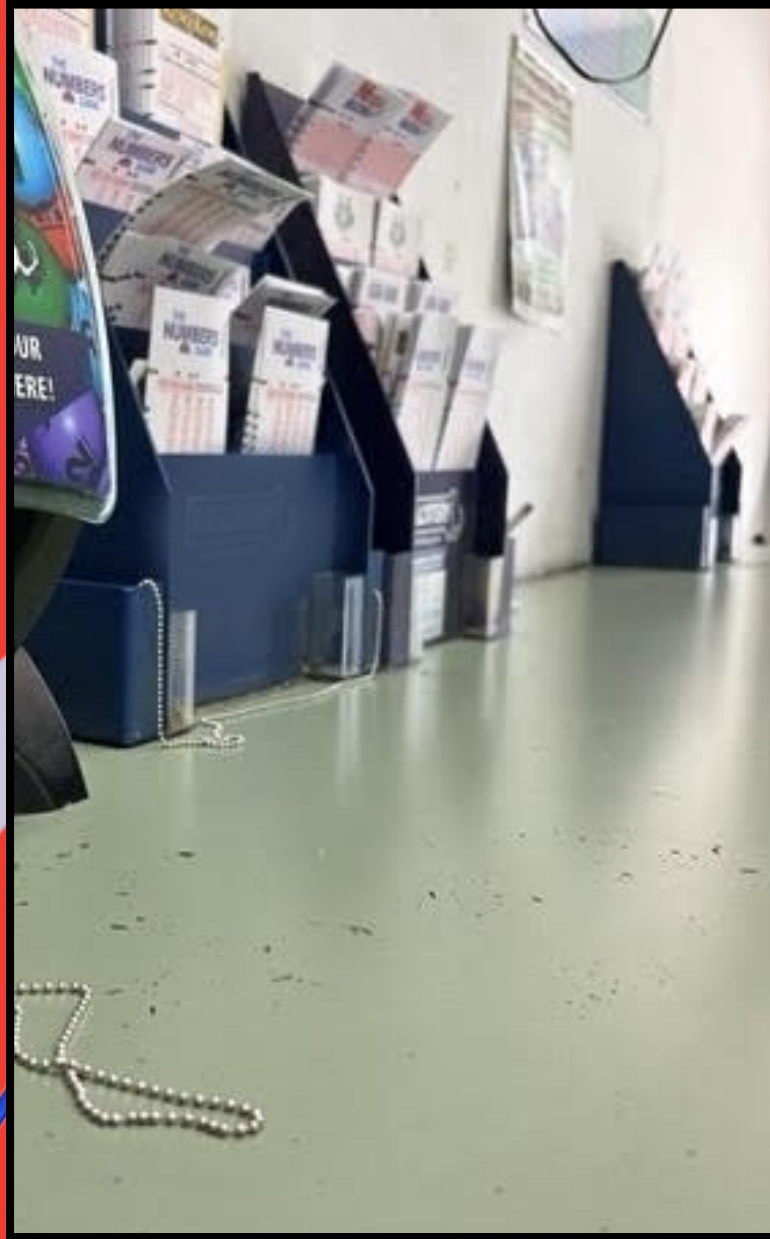
Tern (Guetternensje) Pierre Rene, Sandra Tang, Beyonce Pierre Rene, Neyonca Honore, Zahirr Debel, Jayleen Montiel, Nathanael Ofoedu

JAYLEEN



The image shows a trash can filled with lottery tickets taken at a high angle. On the window there is also a poster advertising the lottery tickets sold. This was taken at a convenient store near Malden High school. I took this picture because I found it really interesting how much tickets were in the trash. It shows how this is normalized.

JAYLEEN



The image above shows a lottery ticket machine scanner. I decided to take the picture at a low-side angle to make the image more interesting. I found this on a table that had only lottery tickets, making it more convenient for people to gamble. I took this picture because I found it interesting how there's a table dedicated to just lottery tickets in this Malden convenience store. Showing how gambling is normalized within society.

JAYLEEN



The image above is a landscape of Malden, with the Encore casino in the background. I had gone to the top level of a garage and saw the casino within the view. I took this picture because the layers of Malden look beautiful. This image shows that Malden overpowers the casino that's behind it, and how our city thrives without gambling.

BEYONCE

This picture of New York Pizza is near Malden Center. Some people would think it is a part of Malden Center because it showcases the community. A lot of people, not just high schoolers, go here. I have seen middle schoolers and also random adults eat there. This place is just a key eatery in Malden. It gives young people a place to relax, eat, and talk with friends.



BEYONCE

In this image of a smoke shop, there is a playground in the background. Not only that, this smoke shop is only a few minutes away from Malden High. I took this picture at an upward angle and a little further away to get the smoke shop sign and the playground in the same frame. To show that there are not enough efforts to stop teenage smoking. This is a reminder to put regulations in place to lower the number of smoke shops near child-friendly environments.



BEYONCE

In this picture, there is a crave box in the perimeter of the old abandoned Citizens Bank in Malden Center. I took this picture to inform people about teen vaping in Malden since a vape box is near an area where lots of teens hang out. We can try reducing teen vaping by putting more restrictions on smoking in schools and spreading more smoking awareness at a young age. If we start informing younger generations about the dangers, we can decrease the number of future teenage smokers.



TERN

This is a picture of a street from the inside of a car on a rainy day. I took this picture because of the contrast between the beautiful sky and the ugly pavement. In this picture we can see the broken up pavement. It plays into the stereotype that Massachusetts has bad pavement work. It showcases just how frequently the little things go unnoticed.



TERN

This is a picture of the pond at Pine Banks. This was taken when it was warmer outside and the sky was clear. This showcases how Malden isn't all city, there is well kept nature as well. Every city should have a piece of nature at its core.



TERN

This is a picture of Centre Street as the sun is setting. It is one of Malden's main streets, and showcases how peaceful Malden can be. It brings into perspective how Malden is bigger than the disruptive attitudes we see in the high school's halls.



ZAHIRR

This image is one that I took from a low angle. It was taken near the SalemWood School near the ramp that leads to the park. I took this photo because it was such a beautiful part of Malden that you don't get to see everyday. Even looking at the photo now I still think the same thing I did in that photo, that Malden is beautiful and that such beauty is meant to be preserved.



ZAHIRR

I took this image after a fun day out with friends. As the sun was setting I thought to capture the moment as it was so beautiful. This aspect of Malden remains the same even though Malden does have its hardships. At the end of the day it's as beautiful as we can see in this photo.



ZAHIRR

I took this image after a fun day out with friends. As the sun was setting I thought to capture the moment as it was so beautiful. This aspect of Malden remains the same even though Malden does have its hardships. At the end of the day it's as beautiful as we can see in this photo.



SANDRA

This is a picture of Malden Station from a higher point. We can see apartment buildings, Malden Station, and a middle school; three different communities within one community. It shows the versatility of Malden and how these different communities can come together at the end of the day.



SANDRA

This is a picture of MacDonald Stadium. This stadium holds many memories, different for each Maldonian. Whether those emotions be happy, sad, or disappointment, we all have something that brings us all together.



SANDRA

In a neighborhood full of high tax bracket houses, there is this one house that has been left mistreated for multiple years now. It calls into question the importance we give to different facets in our community.



NATHANAEL



This photo reflects the heart of the Malden community because it has the potential to be so much better. The community can make it possible by bringing teens together to start group projects that nurture this city, giving Malden a motto, "A greater purpose with a greater family." Doing this can keep children away from gambling or save them from low points of poverty where they no longer have to rely on gambling as a means to live.

NATHANAEEL

This image is of a wall full of scratch lottery tickets, which I believe shines a light on the marketing industry and how producers provide these tickets as an alternative to low-class/middle-class consumers as an option out of poverty.



NATHANAEL



This image is of the casino from the Malden garage, being a symbol of greed. I wanted to use this as a call to action, showing that even Malden doesn't need casinos, and not only to not thrive off gambling but to focus on building up the city and proving the fruitfulness of community building.

NEYONCA



Limited budget, unlimited spirit. The photo was taken at Reggie Lewis Center in Boston. I took this photo to showcase the track teams incredible abilities despite how underfunded it is, this matters to me because for the longest time we had to share our uniforms with the softball team and only recently did we get new uniforms.

NEYONCA

Malden spreads the joy of reading, this photo was taken at Suffolk Park, I took this photo because it gives youths access to free books showing how Malden supports them.



Resources:

CHA Malden Teen Health Center: 781-338-0101

Gambling Helpline: 1-800-327-5050 |

<https://helplinema.org/problemgambling/>

Office of Problem Gambling Services:

<https://www.mass.gov/orgs/office-of-problem-gambling-services>

Additional Information on the Risk of Gambling for Teens:

<https://www.mass.gov/service-details/teens-gambling-its-a-risk>

CHA Community Behavioral Health Center (CHBC): 195 Canal Street, Malden. **24 Hour Access Line:** 833-222-2030

Contact us:

Marie Yveline Antoine, Youth Coordinator, Community Health Department
maantoine@challiance.org

Ruthy Perez, Program Assistant, Community Health Department
ruperez@challiance.org

Jean Granick, Program Manager, Health Equity Initiatives, Community Health Department
jgranick@challiance.org

Jaime Lederer, Director Community Health Youth Initiatives, Community Health Department
jlederer@challiance.org

